

MODEL 464

ALUMINUM FULL-VIEW



Model 464 with Opaque Black glass

NEW DESIGN SEAMLESSLY INTEGRATES INDOOR AND OUTDOOR SPACES.

Wayne Dalton's new Model 464 Aluminum Full-View door features frameless glass panels mounted on an aluminum structure for an ultra-modern look. Model 464 is available in five different glass finishes and five aluminum structure finishes. Weather resistant and low maintenance, the Model 464 is ideal for commercial applications such as restaurants and auto dealerships.

» **FRAMELESS DESIGN ON AN ALUMINUM STRUCTURE**

» **VARIETY OF GLASS AND FINISH OPTIONS**

» **STANDARD SIZES UP TO 18'2" WIDE AND 14'1" HIGH**

MODEL 464

STANDARD FEATURES OVERVIEW

CONSTRUCTION

MAX WIDTH	18'2" (5486 mm)
MAX HEIGHT	14'1" (4318 mm)
DOOR ASSEMBLY:	Stile and rail assembly of aluminum alloy 6063-T6, 1 3/8" thick stiles and rails, joined with self tapping screws
RAILS:	Top and bottom rails with 3 1/2" wide, lower intermediate rail 1 3/8", upper rail 1 5/8", minimum wall thickness 0.062"
STILES:	End stiles are 3 1/2" wide, center stile 3" wide, minimum wall thickness 0.062"
SPRINGS:	10,000 cycles
TRACK:	Provide track as recommended by manufacturer to suit loading required and clearances available

COLOR OPTIONS

GLASS	Opaque White, Opaque Black, Mirrored Gray, Mirrored Bronze, Translucent Black
STRUCTURE	Powder Coat (standard): White, Black, Bronze; Anodize Finishes (optional): Black, Bronze
WARRANTY	One (1) Year Limited.

OPTIONS

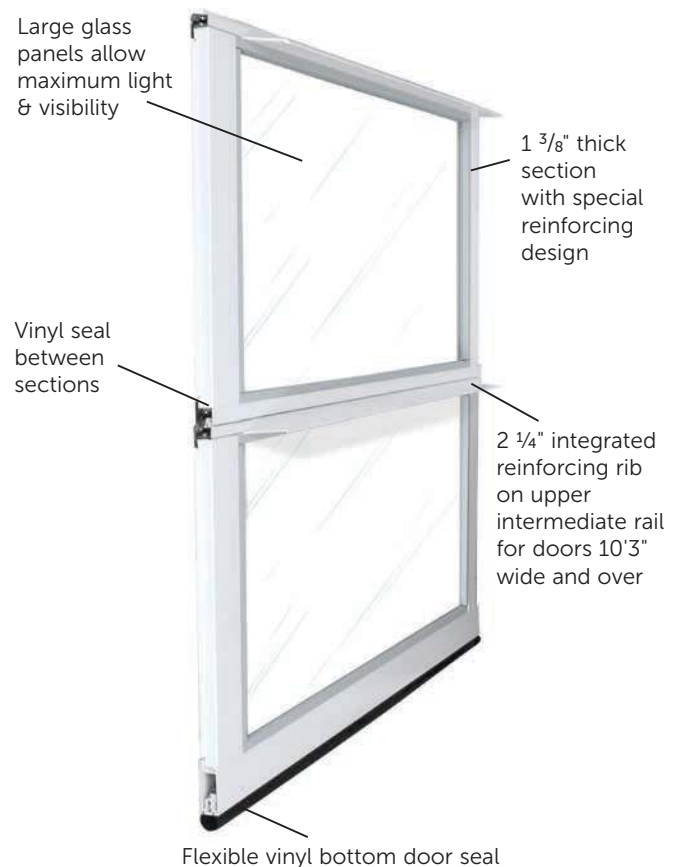
- Springs: 25,000, 50,000 or 100,000 cycles
- Jamb and header seals
- White or Black powder coat track

Model 464's frameless design is the ultimate sleek and modern aluminum full-view door.

Wayne Dalton's Model 464 is ideal for restaurants, auto dealerships and any application where the door needs to integrate seamlessly with the aesthetics of the building.

MATERIALS AND CONSTRUCTION

Built on our rugged aluminum structure, the door is designed for long life. Glass is adhered to the front of the door using the same adhesive as on skyscrapers. A vinyl seal between the section seals the section break, minimizing air flow.



ALUMINUM FULL-VIEW



Model 464 with Translucent Black glass

GLASS OPTIONS



Opaque White



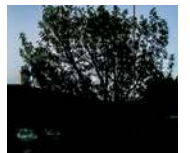
Opaque Black



Mirrored Gray



Mirrored Bronze



Translucent Black

STRUCTURE OPTIONS

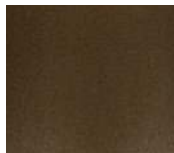
Powder Coat Finishes (Standard)



White

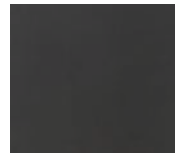


Black

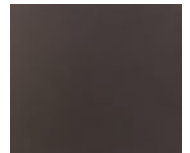


Bronze

Anodized Finishes (Optional)



Black



Bronze

ALUMINUM AND GLASS PAIRINGS

ALUMINUM OPTIONS	GLASS COLOR
White Powder Coat	Opaque White
Black Powder Coat / Bronze Powder Coat / Black Anodized / Bronze Anodized	Opaque Black / Mirrored Gray / Mirrored Bronze / Translucent Black

DOOR SIZE AVAILABILITY

Minimum width 5'0"; Maximum width 18'2" (1" increments)

Minimum height 6'0"; Maximum height 14'1" (3" increments)

WIDTH	HEIGHT			
	6'0"	9'0"	12'1"	14'1"
5'0"	•	•	•	•
14'2"	•	•	•	•
16'2"	•	•	•	NA
18'2"	•	•	NA	NA

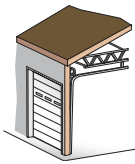
SECTION SELECTION GUIDE

DOOR HEIGHT	NUMBER OF SECTIONS
<= 6'1"	3
6'2" to 8'1"	4
8'2" to 10'1"	5
10'2" to 12'1"	6
12'2" to 14'1"	7

HINGE PANEL GUIDE

DOOR WIDTH	NUMBER OF HINGE PANELS
5'0" <= 9' 2"	2
9'3" <= 12' 2"	3
12'3" <= 18' 2"	4

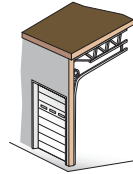
TRACK SELECTION GUIDE



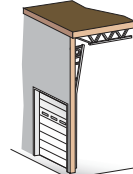
STANDARD LIFT



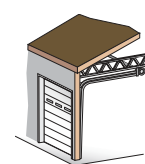
HIGH LIFT
break-away is standard, straight incline is available



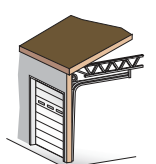
ROOF PITCH
standard or high lift



VERTICAL LIFT
break-away is standard, straight incline is available



LOW HEADROOM
rear mount torsion



LOW HEADROOM
front mount torsion



Architect Resource Center

Go to wayne-dalton.com/commercial and click on the Architect Resource Center. Here you will quickly find all of the specifications, drawings and documents you need to complete your project.

Wayne Dalton
COMMERCIAL DOORS

DISTRIBUTED BY:

2501 S. State Hwy 121 Bus., Ste 200
Lewisville, TX 75067

wayne-dalton.com



©2016 Wayne Dalton, a division of Overhead Door Corporation. Consistent with our policy of continuing product improvement, we reserve the right to change product specifications without notice or obligation. Item W900-1094 7/2016